



Newsletter of the
Zilker Neighborhood
Association

OCTOBER 2014

Austin, Texas
Established 1981

Special Events Ordinance Loses Steam on Its Way to Council

by David King, ZNA Vice President

AS THE SHIFTING WINDS OF FALL blew blasts of Austin City Limits music into surrounding neighborhoods, the city's proposed Special Events ordinance ran into headwinds from the Austin Music and Public Safety commissions earlier this month. Both commissions refused to recommend the proposed ordinance to the City Council.

The Austin Music Commission recommended that the City Council table the Special Events ordinance because it falls short on the goals of a less complex and streamlined permitting process. The commission also noted that significant concerns from neighborhoods and nonprofit groups are not addressed in the proposed ordinance.

The Public Safety Commission made it clear that special events should pay for themselves and recommended that the ordinance *(Continued on page 10)*

ZNA Election Meeting

October 27

Monday 6:30-8:30 PM

at

Zilker Elementary School

1900 Bluebonnet



Residential Permit Parking (page 5)

South Lamar Corridor Plan (page 4)

ACL Fest Feedback (page 10)

Holiday Families Program (page 8)

ZNA Officer Election (page 11)



Newcomers, homeowners, renters,
business neighbors

❖ ❖ **All Welcome** ❖ ❖



Election Day is Tuesday, November 4.

Early voting is October 20-31.

ZNA is in City Council District 5, with a strong field of candidates.

Four of them (Dan Buda, Dave Floyd, Ann Kitchen, and Mike Rodriguez) filled out the Austin Neighborhoods Council questionnaire, available at ANCWeb.org, and presented them-

selves well at the Barton Hills-South Lamar-Zilker forum on October 9. They all deserve our serious consideration and thanks for participating in this historic 10-One City Council campaign. In District 5, we can't say there's nobody to vote for.

Precincts 332 and 340 vote at Zilker School (1900 Bluebonnet)

Precinct 342 votes at Barton Hills School (2108 Barton Hills Dr.)

You may also vote at any other Travis County polling place on election day.

Check election info at traviscountyelections.org or call 512-238-VOTE.

Inside this issue:

Page 2, *Zilker Elementary School fundraising*

Page 3, *Zilker Elementary School events*

Page 4, *South Lamar Corridor Plan, Treadwell sidewalk*

Page 5, *Residential Permit Parking*

Page 6, *Adopt a Creek*

Page 7, *Little Zilker Neighborhood Park Work Day, Nov. 1*

Page 8, *Holiday Families Program*

Page 9, *ZNA boundary map*

Page 10, *ACL Festival feedback, ZNA officer nominations*

COWs and Edible Schoolyards: Ways to Support Zilker Elementary

ONE OF ZILKER ELEMENTARY School's biggest needs right now is technology. The PTA is launching a campaign to raise \$10,000 to replace many of the school's aging computers. Below is a letter from Principal Randy Thomson describing the fund, "We Are Zilker."

The Zilker Neighborhood Association will be donating much of the proceeds from our Austin City Limits Music Festival ticket sales to "We Are Zilker." Every year, C3, the promoter of the festival, provides ZNA with tickets, which are sold to neighborhood residents. Over the years, the ticket sales have contributed thousands of dollars to school arts programs and supplemented the ZNA Holiday Families Program (see page 8 for more on the Holiday Families Program).

The second weekend of ACL has more than doubled ZNA's proceeds from ACL, and so we will also be donating to the school's Spanish Language Program and to the Edible Schoolyard Project.

The PTA has been offering bilingual essentials for Zilker children through the Spanish program for five years. Funding primarily comes from student tuition, but more than 40 percent of our 500-student base comes from economically disadvantaged families who cannot make additional payments. To make this program a success, the PTA must raise at least \$20,000 for PK-2nd grade, and so the support of neighbors and businesses in the community is essential.

Building on the rainwater harvesting and urban orchard projects at the school (see the February 2012 *ZNews*), the newly created Edible Schoolyard Project has already received startup funding from the Odd Duck restaurant. A committee of parents, teachers, and community members (including Jabo, who has been helping kids garden at Zilker for quite a few years now) hopes to plant new gardens in the spring that will teach students about connections between growing food and math and science.

For more information about school and PTA events, please visit www.zilkerelem.org.

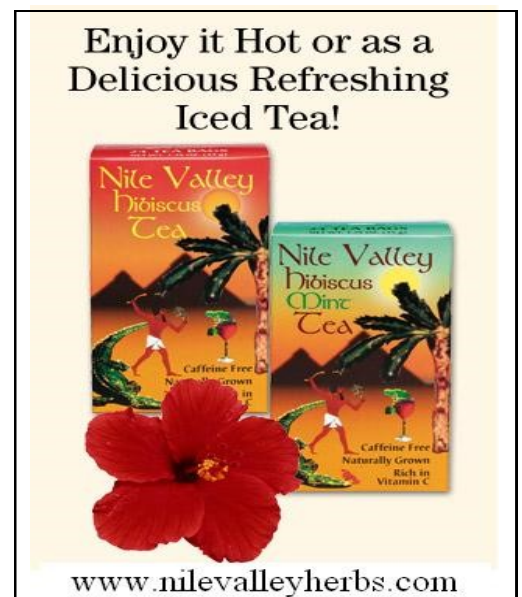
Thanks to Jacquie Benestante with the PTA for keeping ZNA and the neighborhood up to date on school news.

From the Principal: We Are Zilker

Dear Zilker Families,

It's my pleasure to share with you what the buzz is about this fall. It's about the campaign called **We Are Zilker**. Maybe you have seen a poster or two around school with all the circles? **We Are Zilker** is a call to action for the Zilker Fund, our new fall fundraising initiative, which this year is dedicated to raising funds for technology.

With 25 computers nearing end-of-life in our computer lab, we are eager to upgrade and enhance the technological opportunities for our children. Funds raised will also enable us to fill our Computers on Wheels (COWs) that travel to each classroom teaching technology based programs. Currently there are not enough laptops on them



so each student in every class can participate at the same time. We want to change that! These items just top the list of technology needs, there are also many more.

We are Zilker reminds us that we are a circle of people with a common purpose – to make a difference in our children’s lives. Together as a community, we can help our students succeed with the skills necessary for the future. Please consider supporting the Zilker Fund this fall semester. Learn more at www.zilkerelem.org/ donate and from there make a sustaining donation or a one-time gift. Or simply make a cash or check donation to Zilker PTA to foster 21st century learning at our school.

We are Zilker! Together we ALL make Zilker a great place for kids.

*Sincerely,
Randall W. Thomson
Principal*

BookPeople Partnership

Support reading, a great local business, and Zilker Elementary by shopping at BookPeople the week of Nov. 14-21. Shop for books, cards, crafts, jewelry, stocking stuffers, and unique gifts. At checkout, simply turn in the Zilker BookPeople flier, available at www.zilkerelem.org the week before the event, to the cashier. BookPeople will donate 20% of net sales to the PTA. If you forget the flier, just say you’re shopping on behalf of Zilker. Anyone can participate! Please encourage your friends, family members, and neighbors to shop for Zilker Elementary. BookPeople is at 603 N. Lamar.

Holiday Sing Along, Dec. 12

We welcome Zilker neighbors to attend this free event, featuring multicultural songs celebrating a variety of holidays. The entire school is invited to participate in performing. Join us on Zilker Elementary's front lawn at 6 PM for this fun-filled annual tradition. Check the listserv for more details closer to the event!



i BIRDS BARBERSHOP
**aus
tin**

photo by alison narro

**jady, soccer daughter
girlybird, \$29**

s. lamar burnet e. 6th s. congress e. 41st slaughter birdsbarbershop.com



STILES
REAL ESTATE AGENCY

We are a team of local agents helping with homes, investments, leasing and commercial properties.
See you around the neighborhood.

Call us. 512.663.7619 | thestilesagency.com



MAUDIE'S TEX-MEX

**COME ON IN THE QUESO IS HOT
AND MARGS ARE COLD**

@MaudiesTXMex WWW.MAUDIES.COM f Maudie's TEX-MEX

On the Move in Zilker

News from WaBuCy Zilker

MEMBERS OF WABUCY ZILKER have been keeping track of the South Lamar Corridor Plan and Mobility Study (see the February 2013 *ZNews*). The City has hired a team of consultants, and the initial data-collection phase of the project is under way. This phase includes gathering data about traffic, pedestrian mobility, current sidewalk conditions, and more. The team will conduct a “walk audit” with neighbors, to walk along the corridor and document issues and challenges. One way the City is collecting data is through Bluetooth tracking of cars. If a car has a Bluetooth user inside, then the City can track where that car travels along the corridor and whether that car is using cut-through streets.

The public input process will begin in November with a public open house, followed by 6-8 stakeholder meetings. Another public input session will take place next spring or early summer, after the initial recommendations are pro-

posed. The final plan will be rolled out next summer. The consultants are still working on the public engagement plan. Watch neighborhood Yahoo groups for updates on the November open house.

City departments involved in the corridor planning team, besides the Transportation Department, will be urban design and planning and development review, health and human services, and Capital Metro. Wabucy Zilker has asked that staff with the child safety program, urban trails program, and Parks and Recreation serve on the team, too.

Thanks to Heather Way and Andy Elder for updates on the South Lamar Corridor Plan.

Pedestrian Progress

FUNDING HAS BEEN APPROVED for the completion of a sidewalk in the 1500 block of Treadwell, connecting the new Lamar Union sidewalk to Kinney Avenue. This gap has been on ZNA's sidewalk priority list since 1999. Thanks to neighbor Suvi Aika for taking the lead on this project.

WaBuCy Zilker (Walk, Bus, Cycle) = neighbors working to increase walking, bus riding, and cycling for transportation and to advocate for related infrastructure improvements in the Zilker neighborhood.

To keep informed on issues of walking, bus riding, and cycling in the Zilker area, find WaBuCy on Facebook, join wabucy@yahoogroups.com, or e-mail wabucy@gmail.com

**Giftling a Massage
Just Got Better!**

vitawellness
message programs
wellness products



Autumn Elias
License# 030980

**Check Out Our New
Massage Gift Bundles**

Purchase a massage
plus some groovy goodies!

**Purchase & Schedule Online
at vitawellnessllc.com**

Located off S. Lamar & Oltorf

**Barton Hills
Assisted Living**

(512) 441-6000

License#000389

1606 Nash Avenue

Offering personal care in an elegant home-like environment, conveniently located near downtown.

- Private and Semi-private Floor Plans
- Three nutritious hot meals daily.
- 24 Hour Attendant Supervision. Licensed Nurses.
- Physical, Social and Recreational Activities
- Housekeeping Services
- Medication Services

www.bartonhillssal.com

From *Austin Mobility News*: The Austin Transportation Department is installing two new signals on South Lamar that will increase pedestrian connectivity and safety for all roadway users. One signal is north of Panther Trail (near the Broken Spoke) and will create a signalized intersection. The other signal is a Pedestrian Hybrid Beacon that will be located on South Lamar near Oxford Avenue. Stay tuned for activation of the signals; both are anticipated to be complete in the next couple of months.

**Fast-tracked
Parking Permits**

NOW THAT THE ALAMO Draffhouse is open, residents on Josephine, Jessie, Ethel, Dexter, Treadwell, and Kinney have noticed some parking problems near the new Lamar Union, and they are beginning to consider whether to apply for Residential Permit Parking (RPP). Guidelines for RPP applications can be found on the City web site, austintexas.gov, under traffic-and-parking.

Because Lamar Union is a Vertical Mixed Use (VMU) project, residential streets within 600 feet will be eligible for expedited, or fast-tracked, review of RPP requests. That means parking studies and the collection of license plate information will not be required, and staff will review the application within two weeks.

ZNA has asked Mario Porras, with the City's RPP program, to attend our Oct. 27 meeting and talk briefly about how to apply for parking permits. For more info, contact Dave Piper through www.zilkerneighborhood.org.



Lamar Plaza Drug Store
512-442-6777
Serving the Zilker Neighborhood since 1957
Proudly Independent!

1509 South Lamar Blvd, Suite 550

**SHORT WAIT TIME
for prescriptions
& FREE DELIVERY**

- Complete line of wellness supplements
- Wellness consultant on staff for questions
- Custom compounding
- Hormone replacement
- Pain management
- Veterinary compounding (all pets)
- Medical equipment (walkers, canes, wheelchairs, bath safety)

Zilker Resident and Realtor since 1991



Friends Don't Let Friends Buy or Sell Real Estate Without Talking to Tom First

Tom Amiss
The Amiss Group



2011
2012
2013
2014

512/442-8581
tom@tomamiss.com
www.tomamiss.com



New Patient First Visit

- Gentle Exam
- Thorough Consultation
- X-rays (If needed)
- 1st Adjustment
- 1 hour Deep Tissue Massage**
- Free Biomat Session
- \$375 Value only \$150**

474-5433 (LIFE) 4006 S. Lamar Suite 650
www.AustinActiveLife.com

Restoring the Robert E. Lee Tributary
by Gail Rothe

EVER WALKED along Robert E. Lee Road and noticed the small waterway near the sidewalk? That is the Robert E. Lee tributary of Barton Creek. Can you imagine large cypress trees or other native trees growing there and shading the sidewalk? Native grasses and wildflowers along the banks? A trash-free waterway that complements the adjoining parkland? It can happen!

Zilker neighborhood can now partner with the City of Austin and Keep Austin Beautiful (and, of course, Mother Nature) to create a more beautiful, biologically functioning stream corridor in our neighborhood. The restored stream will do a better job filtering pollutants from our neighborhood's storm water runoff before it reaches Barton Creek and Lady Bird Lake, lessening erosion, mitigating flash floods, and increasing wildlife habitat. And the benefit goes well beyond our neighborhood. This greening of Austin's extensive network of small and large streams is part of the effort to reduce the City's carbon footprint.

As a first step, in 2012 the City ceased mow-



Long Term Goal: To establish a healthy riparian buffer on each side of the creek, with a woody canopy, understory, and diverse and dense ground cover while providing frequent open view corridors between 3 and 7 ft.

Illustration courtesy of City of Austin Watershed Protection Dept.

ing the waterway by creating a "Grow Zone." (See the April 2012 *ZNews*.) Allowing vegetation to grow has begun the process of healing this urban stream. So, what are the next steps and how can Zilker residents get involved? First, Keep Austin Beautiful will help support periodic clean-ups and restoration projects of the waterway by providing supplies and other support. And the City will help us develop a restoration plan that may include removing invasive plants, seeding the banks, and other activities. Opportunities to participate in these activities will be announced in this newsletter and on the Yahoo group (zilker@yahoo.com). For more information in the meantime, contact Gail Rothe (grothe@austin.rr.com) or David King (dking@austin.rr.com).

**South Austin
 Community
 Acupuncture**



acupunctureworldheadquarters.com
(512)707-8330

TOYOTA & LEXUS service

**Bluebonnet
 AUTO REPAIR**

2129 Goodrich

512-445-5566
 Established 1988
 Cliff Dunn, owner

Fall Work Day Brings Out the Best in Little Zilker Park

THE FALL WORK DAY for Little Zilker Neighborhood Park is right around the corner, on Saturday, November 1.

At least twice a year, in the the fall and the spring, your help is needed for maintenance, up-keep, and new projects on the grounds of our neighborhood park and the campus of Zilker Elementary School. This season we will be mulching young trees and caring for other plantings on the school campus. A smaller crew will be experimenting with small-scale berm and swale techniques to prevent erosion in the park, as described in the July 2014 *ZNews*.

Come see how the fruit trees planted in the school's urban orchard (see the February 2012 *ZNews*) are thriving. Adults and kids are welcome! Invite your neighbors! We will be starting at 10 AM next to the Library. If you would like to help out, please contact littlezilker@gmail.com and provide your name, how many adults, how many kids, and any available tools you can bring.

Join the Friends of Little Zilker Neighborhood Park through the Yahoo group for FLZP@yahoogroups.com.

Contact FLZP at littlezilker@gmail.com to find out how to participate in volunteer projects. Subscribe to the FLZP Yahoo group to keep up with planning, meetings, and events.

NOW ACCEPTING TRADE-INS



517 South Lamar Blvd
512.477.3472

10947 Research Blvd.
512.345.7460

9900 W. Parmer Lane
512.637.6890

BICYCLE SALES, SERVICE & RENTALS

VISIT BICYCLESPORTSHOP.COM



Transformations Building & Remodeling

"Lakshmi is the most service-oriented contractor we have ever worked with."
~ Zilker resident

transremo.com
512.415.7734

living and working in your neighborhood



Recent Sales in 78704

2714 Tether Trl
1600 S 5th St
2906 Brintwood Ave
1912 Goodrich Ave
3402 Aldroyche Dr
2007 Montclair St
3101 Dolphin Dr
2807 Oak Park Dr
916 Gibson St

Pending Sales in 78704

2109 Airole Way
2501 Wilke Dr
2611 E Side Dr

Blairfield
REALTY

We  **Zilker!**

512-968-9080
www.blairfieldrealty.com
blairfieldrealty@gmail.com

How to Make a Child Smile:
Making the Holidays Happier for Our Zilker Neighbors
by Barbara Cossie, ZNA Holiday Families Program Coordinator Emerita

THE HOLIDAYS are just around the corner, and for the kids that means wish lists, sweet treats, and a winter break from school. For you and me, it means shopping lists, packed calendars, and working overtime, all the while trying to avoid the dessert table. But somehow we get through it, don't we?



neighbors continue to open their hearts to the families and children of Zilker Elementary School.

Here in the Zilker Neighborhood Association, over the last twenty years or so, we have also managed to help neighbors in need. The ZNA Holiday Families Program has helped dozens of families and hundreds of children celebrate a happier holiday season. Through donations of money, gifts, food, and time, our Zilker

As in years past, eight families who need assistance for the holidays will be chosen from Zilker Elementary School, through the school counselor. The school counselor gathers their wish lists and passes that information on to the ZNA Holiday Families Program. From those lists, the ZNA Elves collect and purchase gifts, wrap them, and deliver them to the families shortly before Christmas.

This holiday, if you have been blessed with good fortune, pay it forward by donating a toy or other gift item to our sponsored families. Donations of money and gift cards are also welcome. Any money

ZNA Holiday Families Program Volunteer Sign Up 2014

Yes, I want to help make the holidays happier for Zilker families.

Name: _____

E-mail: _____ Address: _____

Phone: _____

- I would like to purchase a gift from a family's gift list. Please contact me when the lists arrive.
- I would like to become a Zilker elf. Please contact me about wrapping presents.
- I would like to donate money to the ZNA Holiday Families Program.
- I have enclosed a check for \$_____ (Write "Holiday Families" in the memo line.)

Please make checks payable to Zilker Neighborhood Association and mail with this form to:
 ZNA Holiday Families Program, 2009 Arpdale, Austin, TX 78704

BECOME A ZNA MEMBER TODAY

Membership is open to Zilker residents (renters or homeowners) 18 years old or older.
 Nonresident property owners are not eligible for membership.
Annual dues are \$7 per person. Please list each member name and e-mail address below.

Name: _____ E-mail: _____

Name: _____ E-mail: _____

Address: _____ Phone: _____

Dues amount: _____ Additional contribution: _____ Total Enclosed: _____

Please make checks payable to Zilker Neighborhood Association and mail with this form to:
 ZNA Memberships, 2009 Arpdale St, Austin, TX 78704
 or bring this form with you to the next ZNA meeting

For ZNA bylaws and other info, visit zilkerneighborhood.org.

received for the Holiday Families Program will be used to purchase gifts for the families. Gift cards (in any amount) will be given directly to a sponsored family.

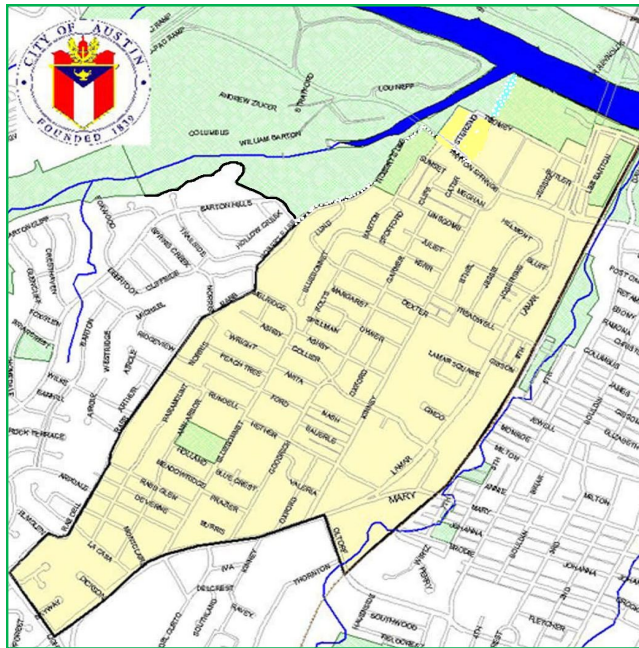
If you would like to make a contribution, please mail in the form on page 8 or sign up at the ZNA meeting on October 27, at the school. You may write a check in any amount to ZNA, but be sure to put "Holiday Families" in the memo line. The wish lists, along with more information on how to donate, will be posted on the Yahoo group (zilker@yahoogroups.com) in November.

The Changing of the Elf Guard

It has been my pride and privilege to coordinate the Holiday Families Program from its beginnings. Now I must turn the job over to someone else. (I'm not moving. Just slowing down.) Last year, when I first called for some new Santa's helpers, a whole workshop full of neighbors responded. So I know the Holiday Families Program is in good hands.

This holiday project started in the last century with one family, then two families the next year. In a few short years ZNA was sponsoring at least eight families for the holidays. That generosity is one of the things that makes Zilker such a wonderful place to live. I am well aware that this program isn't mine. It's yours. It belongs to all of us who live in Zilker, and see beyond our own walls to reach out to help others.

Thank you so much for allowing me to serve our neighborhood with this program. I am very grateful to have had this opportunity. Although I will not be coordinating the Holiday Families Program, I will become a Zilker Elf myself! I look forward to working with you and our HFP committee to continue to bring smiles to Zilker children!



ZNA boundaries include Zilker Park and Rabb Road on the west and extend to the railroad on the east, Barton Skyway on the south, and Lady Bird Lake on the north. Residents on both sides of boundary streets are eligible for membership.

Kinney Avenue Christian Fellowship



1801 Kinney Avenue
Austin, TX 78704
512-442-6719
kacoffice@kacfaustin.org
www.kacfaustin.org

Sundays:
9:30 am - Bible Study
11:00 am - Worship
11:15 am - Kid's Church



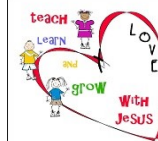
November

- Nov 1st: KACF Fall Festival, 4pm - 6pm
- Nov 17th - 24th: Operation Christmas Child Shoebox Collection Week
- Nov 16th: Thanksgiving Lunch, 12pm

December



- All Sundays: "Sing Christmas," 11am
- Dec 21st: "The Light of Christmas," 11am
- Dec 24th: Candlelight Christmas Eve Service, 6pm



January 2015 Children's Day Out

Mon & Wed: 9am - 2pm
(Registration now in progress)



Recently participated in the sale of:

- 1708 Juliet
- 1912 Goodrich
- 2904 Oakhaven
- 2110 Airole Way
- 2110 Airole Way
- 2607 Trailside #2
- 2007 Westridge
- 1507 Oxford Ave.
- 2906 Westhill

Area specialists for over 25 years!

Call today for a free no obligation market analysis.
Personal, honest service fuels our referral based business.
Values are up - we love spreading GOOD NEWS!

- Peach and Cynthia Reynolds

* Free Notary Service *



440-1799

Email: Peach@kaleidoproperties.com
www.kaleidoproperties.com



(Continued from page 1) include a clear statement that public safety resources not be reduced below standard levels for other parts of the City during large special events like SXSW and ACL Fest. The commission voted not to recommend the ordinance because it doesn't have purview over most aspects of the ordinance and a broad group of stakeholders believe that the ordinance is premature and should be delayed.

At this writing, the ordinance has not been placed on the City Council's agenda for October. If the current Council does not take up the proposed ordinance, special events will remain a campaign issue in the City Council elections. Be sure to ask the District 5 candidates about it when they come seeking your vote.

For neighborhoods close to downtown and Zilker Park, including ZNA, it is important that the City establish a high standard of management and regulation for large events. For us here in the Zilker neighborhood, they are no longer "special events." They are routine. We are now facing four months of disruptions from large events that require a week or more to set up and then more time to restore the park after the event.

This year it began on Sept. 22 with Austin City Limits. Shortly after the park is restored in October, the preparations for the Trail of Lights will begin. During that apparent downtime in November, we will be treated to traffic detours and other forms of entertainment pro-

vided by various Formula 1 events from Oct. 28 to Nov. 3 and Fun Fun Fun Fest at Auditorium Shores Nov. 7 to 9. The preview party for the Trail of Lights will be Dec. 5, and the Trail will end Dec. 21. At the same time, the parkland on the other side of Barton Springs Road will be converted into a race course for the USA Cycling Cyclo-cross National Championships, scheduled for January 7 to 11. And then SXSW and the spring events begin.

An update on the City Council's action, or lack of action, on the proposed Special Events ordinance should be available at ZNA's general meeting on Monday, Oct. 27, along with feedback on the ACL Music Festival and other events in the park.

Austin City Limits Music Festival Feedback

ZNA HAS VOLUNTEERS who work with the City and the promoter to monitor problems and solutions during the Austin City Limits Music Festival, and that includes gathering feedback from neighbors.

This year, violent assaults were added to the usual problems (loud music, trash, traffic, parking, banner-tow planes, and emergency vehicle access) reported during the festival.

On the new technology front, the festival planned to use a new sound meter standard that would significantly reduce the low bass sound waves that cause the window and wall vibrations reported by many neighbors. If you are one of those neighbors, please let ZNA know what your experience was this year.

To provide feedback about the festival, please send comments to sdking9999@yahoo.com or attend the ZNA meeting on October 27 at Zilker Elementary School.

ZNA Officers Nominated for 2015

ON OCTOBER 27, the Zilker Neighborhood Association will elect officers to serve from November 1, 2014, through October 2015. ZNA's bylaws allow the executive committee to accept nominations for the eight elected positions up to a week before the fall election meeting, so you have until Monday, October 20, to volunteer to serve or to nominate someone else. Call any of the executive committee members on page 12, or e-mail them through the ZNA Web site, ZilkerNeighborhood.org.

The Law Office of Robin Theobald Cravey



Your guide to the milestones of middle-class life.

Wills • Probate • Real Estate • Small Business

807 Brazos St. Suite 406, Austin, Texas 78701. 512-236-9655.

www.craveylaw.com

The ZNA executive committee nominates the following slate of officers for 2014:

- President:* David King
- First VP:* Richard Gravois
- Second VP:* Dave Piper
- Secretary:* Jacob Scheick
- Treasurer:* David King
- Social Chair:* Mary Sledd
- ANC Delegate:* Elizabeth Yevich
- ZNews Editor:* Lorraine Atherton

ZNA Membership and Voting Privileges

All ZNA memberships run from Nov. 1 to Oct. 31. To be eligible to vote at the October election or any other ZNA meeting, you must be a member of ZNA for at least 30 days before the date of the vote. If you were a ZNA member in 2013, you may pay your 2014 dues at the Oct. 27 meeting and still be eligible to vote at that meeting. Your 2014 membership, however, will expire at the end of the month, and you will have to renew your dues to retain voting privileges in 2015. For first-time members, dues paid after Sept. 27 will be credited to the membership year beginning Nov. 1.

GIBSON
STREET BAR

★ *every week at the bar* ★

MUSTACHE MONDAYS
FREE TUESDAY TRIVIA
WEDNESDAY WINE & BEER NIGHT WITH
FREE CHEESE PAIRING
BUBBLES & BINGO THURSDAYS
...AND *Brunch Buffet Every Sunday!*

Visit GIBSONAUSTIN.COM - call us to reserve *The Office* for private events!
1109 SOUTH LAMAR 512.386.1345 OPEN AT 4PM DAILY

Reliable Appliance Repair



Don Carpenter
BS Electrical Engineer

A/C and Heating
Appliance Repair

(512) 587-5394

www.ReliableApplianceRepairs.com



**A SOUTH AUSTIN
ICON SINCE 1959**

We offer *Same Day Service* &
Low Impact Solutions to:
Rodents, Roaches, Silverfish,
Termites, Bedbugs, and Ants.
Humane trapping/exclusion of animals.



1800 S Lamar • Austin, TX • 78704
robertspestcontrol@austin.rr.com

512-444-0132

Z Newsletter of the Zilker Neighborhood **NEWS** Association

www.zilkerneighborhood.org
2009 Arpdale St., Austin, TX 78704

E-mail: ZilkerNA@austin.rr.com
Editor: Lorraine Atherton, 512-447-7681
Ad Sales: Dave Piper, 512-916-9636
Distribution: Open
Web site: Dave Piper

Advertisers: ZNA reserves this newsletter's limited advertising space for businesses based within the boundaries of the association.

2014 Executive Committee of ZNA

The Executive Committee may be contacted by e-mail through www.zilkerneighborhood.org

Elected Officers:

President: Gardner Sumner, 468-6200
1st VP: Richard Gravois, 441-3430
2nd VP: David King
Secretary: Jacob Scheick
Treasurer: David King
Social Chair: Mary Sledd
ANC Delegate: Elizabeth Yevich
ZNews Editor: Lorraine Atherton, 447-7681

About the Zilker Neighborhood Association

ZNA holds quarterly meetings, usually the last Monday of February, May, July, and October, at Zilker Elementary School, 1900 Bluebonnet Lane. The Executive Committee meets at 7 PM the first Monday of each month. Watch the Web site for updates.

Our Purpose: To improve the quality of life in the neighborhood in matters of land use, environmental protection, public services, consumer protection, preservation of the historic and unique character of the community; to provide support in other matters of neighborhood concern; and to promote and participate in the civic life of the city.

Committee Chairs:

Holiday Families Program: Barbara Cossie, 447-4437
Membership: Tony Giustino
Parks and Environment: Gardner Sumner, 468-6200
Sound: Bill Neale, bneale15@yahoo.com
Voter Outreach: Elizabeth Yevich
Web site and ZNews Advertising: Dave Piper, 916-9636
Zoning: David King, 415-6016, and Bill Neale



Celebration of Life

Friends of Art and Zee will celebrate the life of Art Blondin

Sunday, November 2

at

Threadgill's

For more info, contact

Christina Fajardo on Facebook.

To donate to silent auction, contact **Beth Galiger on Facebook.**

SOUTHSIDE PRINTING SERVICE

Handy to the Zilker Neighborhood
in the Corners Shopping Center

Forms • Business Stationery • Copies • Color Copies
Faxing • Stamps • Personal Stationery
Business Cards • Flyers • Doorhangers • Envelopes
Labels • Medical Forms • Christmas Cards
Wedding Invitations • Scratch Pads
All Sorts of Custom Printing
Free Pickup and Delivery

(512) 444-2590

southps@sbcglobal.net

3005 South Lamar Blvd., # B-100

Open Monday to Friday

8:30 to 5:30