



Newsletter of the
Zilker Neighborhood
Association

OCTOBER 2015

Austin, Texas
Established 1981

Vote If You Love Zilker

by Lorraine Atherton, ZNA Newsletter Editor



VOTING is perhaps the most important thing we can do for our neighborhood. The Travis County Elections site is currently displaying this quote from Nelson Mandela:

Let us vote in such overwhelming numbers that we show everyone how much we love our country, how much we love our people, how much we love peace, how much we love life itself.

Voter turnout in Zilker is among the highest in the city, but in the historic City Council elections last November, only about half of us voted. Now we are facing another historic vote, on the question of building a new courthouse. If you are registered to vote, please show everyone how much you love your city and our justice system by taking the time to vote.

If you missed the deadline to *(Continued on page 6)*

ZNA Election Meeting

October 26

Monday 6:30-8:30 PM

at

Zilker Elementary School

1900 Bluebonnet



ZNA Officer Election (page 9)

County Courthouse Bonds

Treadwell Permit Parking (page 4)

ACL Fest Feedback (page 3)

Holiday Families Program (page 8)



Newcomers, homeowners, renters,
business neighbors

❖ ❖ **All Welcome** ❖ ❖

Connecting with City Hall

by Ann Kitchen, Austin City Council Member, District 5

Hello Zilker Neighbors!

THANK YOU for all your feedback during the budget conversations. With your help my office was able to identify priorities and make adjustments to the City's budget that not only lowered our property tax rate but also the actual tax bill. We were also able to add \$3 million to the city's investments in parks, pools, and neighborhood libraries, \$7 million to health and human services, a 6% homestead exemption, and add funds for the Rental Assistance Program.

We were also fortunate to identify and pass a resolution providing direction for equitable disbursement of \$21 million in Quarter-Cent Funds to pay for infrastructure improvement projects that address district-specific *(Continued on page 10)*

Inside this issue:

Page 2, *Sustainable Zilker School, Friends of Little Zilker Park*

Page 3, *ACL Feedback, Park Event Task Force, Umlauf Last Straw Fest*

Page 4, *Treadwell traffic, Montclair-Ann Arbor stop sign*

Page 6, *Travis County Courthouse Bond Election, where to vote*

Page 7, *State propositions, League of Women Voters guide*

Page 8, *Holiday Family Program, ZNA membership*

Page 9, *ZNA officer nominations, ZNA boundary map*

Page 10, *Sidewalk projects*

Page 11, *District 5 contact info*

Join the Friends of Little Zilker for Sustainable Gardening at Zilker School on November 7

THE ANNUAL FALL WORK DAY for Little Zilker Neighborhood Park is right around the corner, on Saturday, November 7, at 10 AM to 2 PM.

At least twice a year, in the fall and the spring, your help is needed for maintenance and



Okra blooms in the Zilker Elementary School Edible Garden

new projects on the grounds of our neighborhood park and the campus of Zilker Elementary School. This year members of the PTA's Sustainability Committee will be organizing weeding and pruning in garden areas near classrooms, work in the Edible Garden, Rain Garden maintenance near the portable classrooms (including perk tests), and possibly work on the irrigation for the urban orchard.

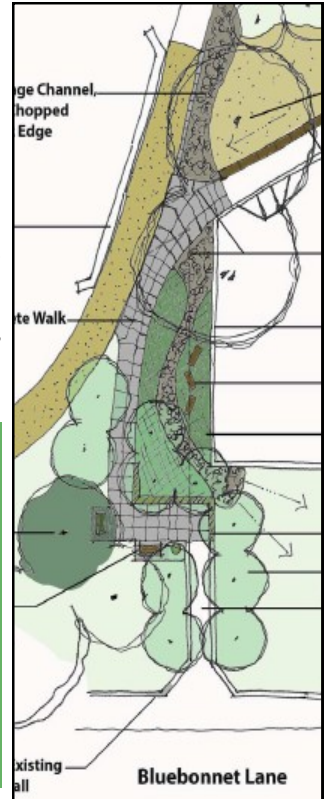
Come see how the Edible Garden, built out last spring, is thriving (March 2015 ZNews). Adults and kids are welcome! Invite your neighbors! We will be starting at 10 AM next to the Library. If you would like to help out, please contact littlezilker@gmail.com and provide your name, how many adults, how many kids, and any available tools you can bring.



The new steps and terraces behind Zilker Elementary, leading up to the basketball court, are complete.

As this newsletter goes to press, the PTA and FLZP are updating the campus and Little Zilker Park master plan, with a view to addressing drainage and the condition of the playing fields (see the July 2015 ZNews, p. 6).

Join the Friends of Little Zilker Park through FLZP@yahoo.com or littlezilker@gmail.com to keep up with park projects, planning, and events.



FLZP has submitted this design, for a new seating area and erosion control south of the Bluebonnet playscape, to the Neighborhood Partnering Program for a matching grant. Sketch by Charles Mabry, Austin Parks and Recreation Department

Southpaws Playschool
www.southpawsplayschool.com

CANINE FUN ZONE

Enjoy it Hot or as a Delicious Refreshing Iced Tea!

www.nilevalleyherbs.com

**Festival Feedback
Goes Year Round**

ZNA HAS VOLUNTEERS who meet regularly with the City and the promoter throughout the year to monitor problems and solutions related to the Austin City Limits Music Festival, and that includes gathering feedback from neighbors.

To provide feedback about the festival, please send comments to sdking9999@yahoo.com or attend the ZNA meeting on October 26 at Zilker Elementary School.

This year we are also gathering feedback on park events in general, through the Parkland Events Task Force (PETF). The City Council established the Task Force last spring to develop recommendations for special event policies, especially in Zilker Park, Auditorium Shores, and Festival Beach. For neighborhoods close to these parks, including ZNA, these events are no longer "special." They are routine. We now face four months of disruption from large events that require a week or more to set up and then more time to restore the park after the event.

The Task Force needs your input on these parkland events. You can participate in several ways: Visit <http://speakupaustin.org/discussions/events-at-austins-parks>, text "Events" to 512-643-5627, send an e-mail to reservations@austintexas.gov, or attend PETF meetings (find meeting info at austintexas.gov/petf).

Public input is encouraged and appreciated, so I hope you will attend a Task Force meeting and provide your input on parkland events.

*Your neighbor,
David King
Parkland Events
Task Force Co-Chair*



THE UMLAUF SCULPTURE GARDEN and Museum is launching its first annual community-wide event, the Last Straw Fest, beginning with a pumpkin carving competition on Oct. 25, to benefit the Capital Area Food Bank. On Oct. 30, adults can enjoy the Haunted Garden at night, in a whole new light. Throughout the week, Sculpted Scarecrows will be judged and prizes awarded on Family Day, Sunday, Nov. 1.

Calling all Austin businesses, artists, architects, and neighborhood groups. Prepare to get creative! Design and build the best scarecrow and win the hearts of Austin at the inaugural Umlauf Last Straw Fest. Sign up your Scarecrow team through laststrawfest.com.

An advertisement for Irie Bean Coffee Bar. It features a silhouette of a person on a beach holding a surfboard over their shoulder, with another person in the background. The background is a large, stylized sun or moon. Text on the right says "FREE WIFI = ENDLESS SURFING". Below that, it lists "2310 S. Lamar", "facebook/Irie.Bean.Coffee.Bar", and "www.iribean.com". In the bottom left corner, there is a circular logo for Irie Bean Coffee Bar with a palm tree and the text "Irie Bean Coffee Bar" and "Austin, Texas".

 An advertisement for Stiles Real Estate Agency. The word "STILES" is prominently displayed in large, white, serif font, with "REAL ESTATE AGENCY" in a smaller font below it. Below the text, it says "We are a team of local agents helping with homes, investments, leasing and commercial properties. See you around the neighborhood." At the bottom, it provides the contact information "Call us. 512.663.7619 | thestilesagency.com". On the right side, there is a circular logo for "THE STILES AGENCY" with "AUSTIN TEXAS" and "COMMERCIAL REAL ESTATE" around the perimeter.

ZNA Traffic Updates

TREADWELL EAST of Kinney has been transformed this year. The City Transportation Department and Lamar Union have made major improvements since our last update (July 2015 ZNews). The unsafe parking area at the transmission shop, which allowed parked cars to back into the intersection (photo on right) has been replaced with a curb and sidewalk. A bench has been installed and trees planted at the nearby bus stop on South Lamar. Plus, the street has been repaved and restriped between Kinney and South Lamar, and a speed cushion was installed at an entrance to a Lamar Union garage to encourage safe traffic flow.

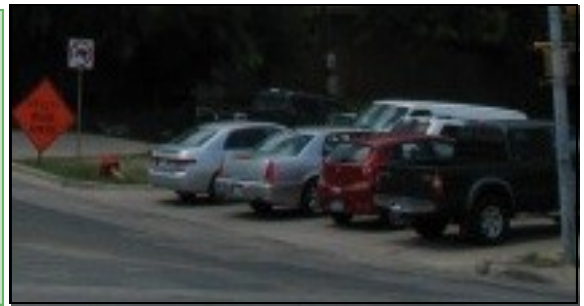
Nearby residents have applied for residential parking permits (RPP) because business customers and employees regularly consume most of the on-street parking. As part of the City's RPP process, the ZNA Executive Committee has endorsed RPP applications for Treadwell, Ethel, Jessie, Josephine, Bluff, Hillmont, and Dexter.

The City's Arterial Management Division has prepared a cost estimate for a left turn signal on northbound South Lamar at Treadwell and is working on funding. (Also see Council Member Ann Kitchen's column on page 1.)

Through the ZNA Transportation and Mobility Committee, neighbors have been working with the City and Lamar Union management to keep these improvements moving

along. If you would like to get involved, please contact Dave Piper or David King, or come to the ZNA meeting on Oct. 26. *David King, ZNA President*

Treadwell at South Lamar before (right) and after (below) sidewalk work.



AT MONTCLAIRE AND ANN ARBOR, the City traffic folks are tinkering with the stop signs, again. If you have comments on the proposal below, please contact the engineer, Mario Porrás, at mario.porras@austintexas.gov or 512-974-7656.

THE AUSTIN TRANSPORTATION Department (ATD) has received some concerns about the intersection of Montclair and Ann Arbor. Specifically, we have heard that vehicles turning northbound from Lamar onto Montclair speed through the intersec-

New Client Special

Autumn Elias
License# 030960

\$50
First Hour
Massage

Jennifer Dayton
License# 116333

Purchase & Schedule Online
at vitawellnessmassage.com

Located off S Lamar & Oltorf

Lamar Plaza Drug Store
1509 South Lamar Blvd
Suite 550
512-442-6777

- Compounded Prescriptions
- Wellness Supplements
- Free Delivery

Get Your FLU SHOT NOW!

Serving the Zilker Neighborhood Since 1957
"Austin Owned & Proudly Independent"

tion. While ATD does not have data to back up the claim, the unusual geometry of the intersection warranted consideration. The current configuration is a two-way stop which allows the vehicles on Montclaire to continue through the intersection while vehicles on Ann Arbor must stop. This is a rather strange occurrence as the street is both a dog-leg and the southern approach is skewed at about 45 degrees. ATD has evaluated the intersection and has a plan to increase the intersection's efficiency.

A four-way stop would not be feasible as warrants would not be met as per the Manual on Uniform Traffic Control Devices. The issue with unwarranted four-way stops is that if a vehicle seldom encounters cross traffic, they are more likely to roll through or ignore the regulatory sign. This would be a cause for concern if vehicles on the cross street expect oncoming traffic to stop.

To address the issue, ATD proposes to switch the direction of stopping traffic to have vehicles on Montclaire (dog-leg approach) stop while allowing vehicles on Ann Arbor (straight street) to continue through the intersection. There is approximately 700 feet between the stop at Arpdale Street and the T-intersection of La Casa Drive, so ATD does not believe speeding within these two blocks of Ann Arbor will be a cause of concern. Additionally, supplemental "shark teeth" striping would be added to the yield on the eastbound right turn from Ann Arbor onto Montclaire to increase visibility and compliance.

If the plan goes through, supplemental signing will inform motorists of the change in traffic control configuration.

*Mario Porrás, E.I.T.
Austin Transportation Department*

Zilker Resident and Realtor since 1991



THE AMISS GROUP
PUTTING PEOPLE FIRST

kw
KELLERWILLIAMS

512-442-8581 office • 512-422-2238 cell • tom@tomamiss.com • www.tomamiss.com

**Barton Hills
Assisted Living**

(512) 441-6000

License#000389

1606 Nash Avenue

Offering personal care in an elegant home-like environment, conveniently located near downtown.

- Private and Semi-private Floor Plans
 - Three nutritious hot meals daily.
 - 24 Hour Attendant Supervision.Licensed Nurses.
 - Physical, Social and Recreational Activities
 - Housekeeping Services
 - Medication Services
- www.bartonhillssal.com



New Patient First Visit

- Gentle Exam
- Thorough Consultation
- X-rays (If needed)
- 1st Adjustment
- 1 hour Deep Tissue Massage**
- Free Biomat Session
- \$375 Value only \$150**

474-5433 (LIFE) 4006 S. Lamar Suite 650

www.AustinActiveLife.com

(Continued from page 1) register to vote, please register today so that you don't miss the primaries in March.

The bond election for the new Travis County Courthouse hasn't generated much controversy, but the question is so important that the ZNA Executive Committee has asked the bond supporters (called "New Courts for Families") to make a presentation at the ZNA general meeting on Monday, Oct. 26. So far, there is no organized opposition. Everyone seems to agree that Travis County needs a new building to house civil and family courts, and that it must be "safe, accessible, and affordable." The issues, however, are cost and location.

The proposition that you will see on the ballot is simple: "The issuance of \$287,275,000 of bonds for the purpose of constructing, improving and equipping civil and family courts facilities and the levying of the tax in payment thereof."

The plan for the building, at Fourth and Guadalupe, is described on the supporters' Web site NewCourtsforFamilies.com:

"The 14 story building will contain 520,000 sf and will hold 28 courtrooms, with space to expand to 33 by 2035. The new Courthouse Complex will be centrally located, no more than half a block from 54 bus routes that serve a majority of Travis County. Further, the facility will have a 4 level underground parking garage. It will be sustainable, energy efficient and aesthetically pleasing. Not only will safety and security be improved for

**Election Day is Tuesday, November 3.
Early voting is October 19-30.**

Precincts 332 and 340 vote at
Zilker School (1900 Bluebonnet)

Precinct 342 votes at
Barton Hills School (2108 Barton Hills Dr.)

You may also vote at any other Travis County
polling place on election day.

Check election info at traviscountyelections.org or
call 512-238-VOTE.

the women, children and families using the courthouse, it will have secured judicial parking and extra security measures in place to prevent possible courthouse violence.

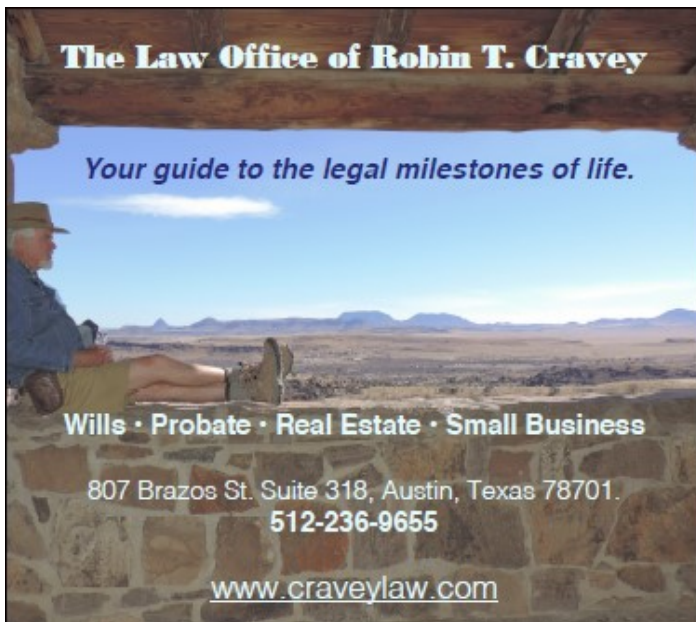
"It will be modern and accessible, featuring electronic filings and integrated technology. It will also be fully ADA compliant. In addition to courtrooms, the building will contain a Law Library and Self-Help Center, plus other District and County offices, such as the County and District Clerk's offices.

"The new Courthouse Complex will have a 4 level underground parking garage with 513 spaces for jurors, employees and visitors to use during the day. The parking garage will be open after hours for public use to help relieve some of the parking tensions in the central downtown area."

NewCourtsforFamilies.com has links to the Strategic Planning Reports for Travis County's Downtown and North (Airport Blvd.) campuses.

The Law Office of Robin T. Cravey

Your guide to the legal milestones of life.



Wills • Probate • Real Estate • Small Business

807 Brazos St. Suite 318, Austin, Texas 78701.
512-236-9655

www.craveylaw.com

**South Austin
Community
Acupuncture**



acupunctureworldheadquarters.com

(512)707-8330

They can provide a useful guide to questions about the location and affordability of all Travis County courts and offices.

The Rest of the Ballot

There are seven state constitutional amendments, or propositions, on the ballot this time, and the League of Women Voters guide offers a quick and easy summary of each one.

The propositions are about homestead exemptions, charitable raffles by professional sports teams, construction of private roads by counties, the right to hunt, and dedicating state sales tax revenue to roads. Especially pertinent to Austin is Proposition 3, "The constitutional amendment repealing the requirement that state officers elected by voters statewide reside in the state capital."

For each proposition, the League of Women Voters guide gives the official ballot language, an explanation of the amendment, and then arguments for and against.

Find the guide online at lwvaustin.org/voter-guide/.

Who else but the LWV is a non-partisan, political organization and one of America's most trusted grassroots organizations? The LWV... encouraging active participation in government ... working to increase understanding of major public policy issues ... influencing public policy through education and advocacy ... making democracy work!

Learn how the League helps shape today's important issues by visiting the website at www.lwvtexas.org.

MAUDIE'S TEX-MEX

AUSTIN BORN AND RAISED

@MaudiesTXMex WWW.MAUDIES.COM f Maudie's TEX-MEX

NOW ACCEPTING TRADE-INS

517 South Lamar Blvd 10947 Research Blvd. 9900 W. Parmer Lane
512.477.3472 512.345.7460 512.637.6890

BICYCLE SALES, SERVICE & RENTALS

VISIT BICYCLESPOESHOP.COM

WELCOMING AUDREY TO THE TEAM!

We're thrilled to announce Audrey has joined Blairfield Realty!

Audrey started her real estate career in 1997 and was a top producer in her firm for seven years. After taking time off to raise her sons in the Zilker neighborhood, Audrey is back in the real estate business! Welcome to the team, Audrey!

Blairfield REALTY

Call us today for a complimentary market analysis on your home!
512-968-9080

Audrey Lehmann Richard
Zilker Resident & Blairfield REALTOR®

Make the Holidays Happier for Our Neighbors Become a Zilker Neighborhood Elf

by Harmony Grogan, ZNA Holiday Families Program Coordinator

AS IN YEARS PAST, at least eight families who need assistance for the holidays will be chosen from Zilker Elementary School. The school counselor selects these families and passes their wish lists on to the ZNA Holiday Families Program. From these lists, volunteers, known as ZNA Elves, shop for, wrap, and deliver gifts to families for Christmas.

If you have been blessed with good fortune this year, pay it forward by donating a toy or other gift item to our sponsored families. Donations of money and gift cards are also welcome. Or, consider becoming a ZNA Elf this year. Volunteering to be a Zilker Elf has the



most direct impact on the number of families that the neighborhood can help. With enough Elf volunteers, the ZNA Holiday Families Program can meet our goal of assisting 10 families this year! We need your help and holiday spirit!

If you would like to make a contribution or learn more about volunteering as a ZNA Elf, please complete and mail the form below or send an e-mail to ZNAHoliday@gmail.com for more information. You may also donate online through www.zilkerneighborhood.org, the ZNA Web site. Any money received for the program will be used to purchase gifts for the families. Gift cards (in any amount) will be given directly to a sponsored family.

ZNA Holiday Families Program Volunteer Sign Up 2015

Yes, I want to help make the holidays happier for Zilker families.

Name: _____

E-mail: _____ Address: _____

Phone: _____

- I would like to purchase a gift from a family's gift list. Please contact me when the lists arrive.
- I would like to become a Zilker Elf. Please contact me with more information.
- I have enclosed a check for \$_____ (Write "Holiday Families" in the memo line.)

Please make checks payable to Zilker Neighborhood Association and mail with this form to:
ZNA Holiday Families Program, 2009 Arpdale, Austin, TX 78704
To donate online, visit zilkerneighborhood.org

BECOME A ZNA MEMBER TODAY

Membership is open to Zilker residents (renters or homeowners) 18 years old or older. (Map on page 9.)
Nonresident property owners are not eligible for membership.
Annual dues are \$7 per person. Please list each member's name and e-mail address below.

Name: _____ E-mail: _____

Name: _____ E-mail: _____

Address: _____ Phone: _____

Dues amount: _____ Additional contribution: _____ Total Enclosed: _____

Please make checks payable to Zilker Neighborhood Association and mail with this form to:
ZNA Memberships, 2009 Arpdale St, Austin, TX 78704
or bring this form with you to the next ZNA meeting
For ZNA bylaws and other information, visit zilkerneighborhood.org.

Nominations for Next Year's ZNA Officers

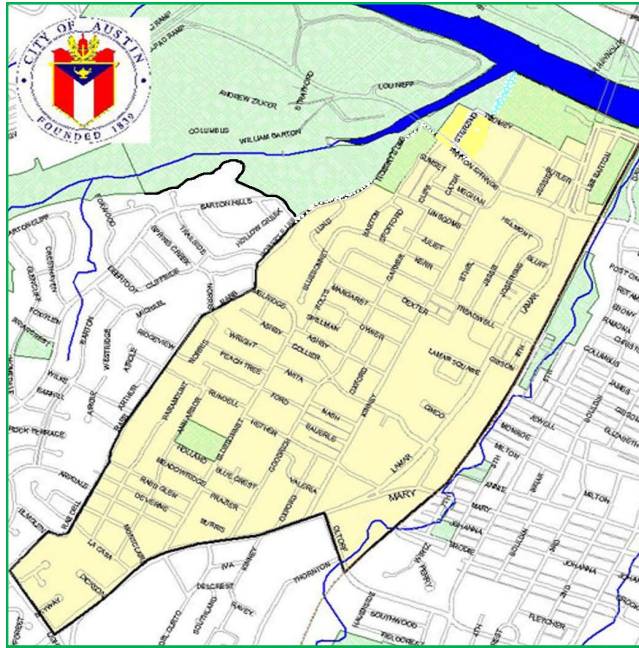
ON OCTOBER 26, the Zilker Neighborhood Association will elect officers to serve from November 1, 2015, through October 2016. ZNA's by-laws allow the executive committee to accept nominations for the eight elected positions up to a week before the fall election meeting, so you have until Monday, October 19, to volunteer to serve or to nominate someone else. Call any of the executive committee members on page 12, or e-mail them through the ZNA Web site, ZilkerNeighborhood.org.

The ZNA executive committee has nominated the following slate of officers:

- President:* David King
- First VP:* Richard Gravois
- Second VP:* Dave Piper
- Secretary:* Bobby Rigney
- Treasurer:* Elizabeth Yevich
- Social Chair:* Dave Floyd
- ANC Delegate:* Jeff Jack
- ZNews Editor:* Lorraine Atherton

ZNA Membership and Voting Privileges

All ZNA memberships run from Nov. 1 to Oct. 31. To be eligible to vote at the October election or any other ZNA meeting, you must be a member of ZNA for at least 30 days before the date of the vote. If you were a ZNA member in 2014, you may pay your 2015 dues at the Oct. 26 meeting and still be eligible to vote at that meeting. Your membership, however, will expire at the end of the month, and you will have to renew your dues to retain voting privileges in 2016. For first-time members, dues paid after Sept. 26 will be credited to the membership year beginning Nov. 1.



ZNA includes Zilker Park and Rabb Road on the west and extends to the railroad on the east, Barton Skyway on the south, and Lady Bird Lake on the north. Residents on both sides of boundary streets may join ZNA. ZNA is within City Council District 5.

Kinney Avenue Christian Fellowship
1801 Kinney Avenue
512-442-6719
kacoffice@kacfaustin.org
www.kacfaustin.org

Trunk or Treat
Saturday
Oct 31st
5-7pm

Thanksgiving Luncheon
Sunday
Nov 22nd

KINNEY AVENUE CHRISTIAN PRESCHOOL
Mon, Wed & Fridays
9am - 2pm
Infants through Pre-K
Taking applications

Christmas Musical Service
Sunday
Dec 13th
11am

Sundays
9:30am - Bible Study
11am - Worship
Wednesdays
5:30pm - Family Supper
6pm - Bible Study

Christmas Eve Candlelight Service
Dec 24th
6pm

Celebrate the season with us

Area specialists for over 25 years!

Considering buying or selling? We welcome the opportunity to work with you. Call today for a FREE no-obligation consultation or market analysis - we love spreading GOOD NEWS!

- Peach and Cynthia Reynolds

*** Free Notary Service ***

KALEIDOPROPERTIES

440-1799

Email: Peach@kaleidoproperties.com
www.kaleidoproperties.com

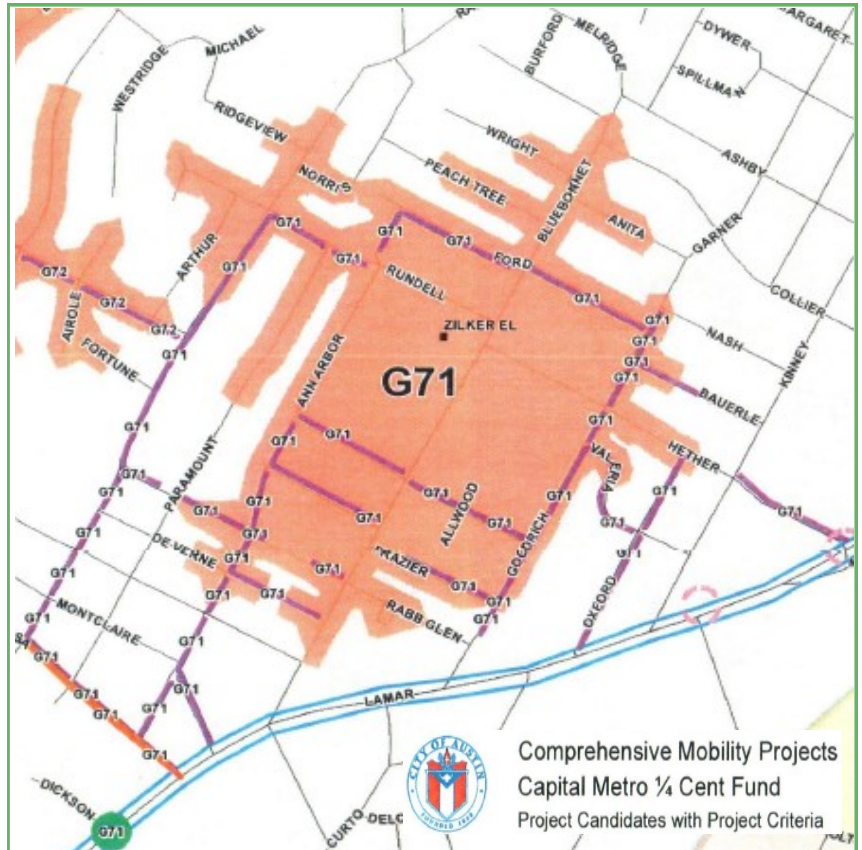
Recently participated in the sale of:

- 1604 Dexter
- 1606 Dexter
- 1804 Ford
- 1135 Barton Hills Dr, #246
- 1100 Robert E Lee, #1102
- 2209 Trailside
- 1307 Kinney, #152
- 2200 Dickson, #209

(Continued from page 1) and/or citywide priorities for improving mobility. That sounds like a lot of money, but as we quickly realized, the needs far outstrip the resources. Subsequently, much work is being done to identify priorities in the district. We met with our Neighborhood Kitchen Cabinet representatives to help set priorities and get initial feedback in preparation for the Town Hall meeting.

Our fourth Town Hall Meeting was held October 10 at the Ann Richards School for Young Women Leaders. We focused the discussion on transportation issues, specifically the Quarter-Cent Funding available for qualified projects in the district. We also included representatives from Capital Metro to answer questions and discuss bus service and trip planning in our district.

The Quarter-Cent Fund Projects conversation will continue at the November 16 Mobility Committee meeting, where we will have our first opportunity to look collectively at all the projects districts are considering for funding to improve transportation and public safety. The full City Council will consider funding these projects likely November 19 or at the



Zilker sidewalk and other projects proposed for more than \$2 million of Capital Metro Quarter-Cent funding. Shading indicates the quarter-mile service area surrounding Zilker Elementary. Project candidates include La Casa, Rae Dell-Rabb, Ann Arbor, Montclair, De Verne, Rabb Glen, Meadowridge, Holland, Frazier, Bluecrest, Ford, Goodrich, Bauerle, Hether, Valeria, and Oxford, plus a pedestrian signal at Dickson on South Lamar. Zilker residents at the Town Hall meeting recommended other projects on Melridge, the north end of Rabb, Hether west of Kinney, and cross streets at Bluebonnet.

photo by alison narro

**travis, quit cubicles
shortcut, \$24
shiner, complimentary**

**i BIRDS BARBERSHOP
aus
tin**

for locations and stylist schedules, please visit birdsbarbershop.com

TOYOTA & LEXUS service

Bluebonnet AUTO REPAIR

2129 Goodrich

512-445-5566
Established 1988
Cliff Dunn, owner

next December meeting.

We are also pleased to share that on Day One of the City's 2015-16 fiscal year, construction of interim safety improvements began at one of the city's top-five dangerous intersections, at Slaughter and Manchaca in District 5. The tragedy of traffic fatalities and injuries on our streets is unacceptable, and this is one example of how we've been able to address a problem intersection as quickly as possible. Thank you to our transportation staff for acting so quickly.

Lastly, we have a new member on our District 5 Team Kitchen, Dora Anguiano. She comes from the Planning and Development Review Department. Some of you may know Dora, as she served for many years as the staff liaison for the Zoning and Platting Commission as well as Planning Commission. We are very excited about bringing her on board and expect she will be a great asset in the office as well as for our District 5 neighbors grappling with zoning issues.

Highest regards to my neighbors in Zilker!

*Ann Kitchen
City Council Member
District 5*

Call or send us an e-mail if you would like to be notified of future meeting opportunities!

ANN KITCHEN, District 5 Council Member;
district5@austintexas.gov

Responsive Office

www.austintexas.gov/government, 512-978-2105

DORA ANGUIANO, Constituent liaison;
dora.anguiano@austintexas.gov

DONNA TIEMANN, Chief of Staff;
donna.tiemann@austintexas.gov

KEN CRAIG, Senior policy advisor;
ken.craig@austintexas.gov

JASON LOPEZ, Policy advisor;
jason.lopez@austintexas.gov

GIBSON

STREET BAR

★ every week at the bar ★

MUSTACHE MONDAYS

FREE TUESDAY TRIVIA

WEDNESDAY WINE & BEER NIGHT WITH

FREE CHEESE PAIRING

BUBBLES THURSDAYS

...AND Brunch Buffet Every Sunday!

Visit GIBSONSTREETBAR.COM

1109 SOUTH LAMAR 512.386.1345 OPEN AT 4PM DAILY

Reliable Appliance Repair



Don Carpenter
BS Electrical Engineer

A/C and Heating
Appliance Repair

(512) 587-5394

www.ReliableApplianceRepairs.com



A SOUTH AUSTIN ICON SINCE 1959

We offer *Same Day Service* &

Low Impact Solutions to:

Rodents, Roaches, Silverfish,

Termites, Bedbugs, and Ants.

Humane trapping/exclusion of animals.



1800 S Lamar • Austin, TX • 78704

robertspestcontrol@austin.rr.com

512-444-0132



**Newsletter of the
Zilker Neighborhood
Association**

www.zilkerneighborhood.org

2009 Arpdale St., Austin, TX 78704

E-mail: ZilkerNA@austin.rr.com

Editor: Lorraine Atherton,
512-447-7681

Ad Sales: Dave Piper,
512-916-9636

Distribution: Open

Web site: Dave Piper

Advertisers: ZNA reserves this newsletter's limited advertising space for businesses based within the boundaries of the association.

**2015 Executive Committee of
the Zilker Neighborhood
Association**

Officers:

President: David King, 512-415-6016

1st Vice President:

Richard Gravois, 512-441-3430

2nd Vice President: Dave Piper

Secretary: Open

Treasurer: Open

Social Chair: Dave Floyd

Austin Neighborhoods Council

Delegate: Elizabeth Yevich

Newsletter Editor:

Lorraine Atherton

Other executive members:

Parks and Environment Chair:

Gardner Sumner, 512-468-6200

Zoning and Code Chair:

Bill Neale, bneale15@yahoo.com

The Executive Committee may be contacted by e-mail through www.zilkerneighborhood.org

UMLAUF sculpture garden & museum

Come see what everyone is talking about...

Art. Framed by Nature.

umlaufsculpture.org
605 Robert E Lee, Austin, Texas

About the Zilker Neighborhood Association

ZNA holds quarterly meetings on the last Monday of January, April, July, and October, at Zilker Elementary School, 1900 Bluebonnet Lane. The Executive Committee meets at the Umlauf Museum, 605 Robert E. Lee Road, 7 PM the first Monday of most months. Watch the Web site for updates.

Our Purpose: To improve the quality of life in the neighborhood in matters of land use, environmental protection, public services, consumer protection, preservation of the historic and unique character of the community; to provide support in other matters of neighborhood concern; and to promote and participate in the civic life of the city.

Southside Printing Service

Forms • Business Stationery • Posters • Color Copies
Stamps • Business Cards • Flyers • Envelopes
Labels • Medical Forms • Wedding Invitations
Brochures • Work Orders and Invoices • Scratch Pads
All Sorts of Custom Printing
Free Pickup and Delivery

(512) 444-2590
southps@sbcglobal.net
3005 South Lamar Blvd., # B-100
Open Monday to Friday 9:00 to 5:30